

# John Murray Lockhouse Development

# Shaftesbury Healthy Living Centre

**Referral Types**

- Talking therapies
- Healthwise
- Family Support

**Health referral Sources**

- GP
- Community
- Occupational therapy
- BHSCT teams
- Self referral

1000 Health related referrals per year received from across Belfast

• South and East Belfast Healthwise exercise referral delivery partner

South Belfast 1 Family support hub

• BHSCT Talking therapies delivery

• 20 + sessions per week

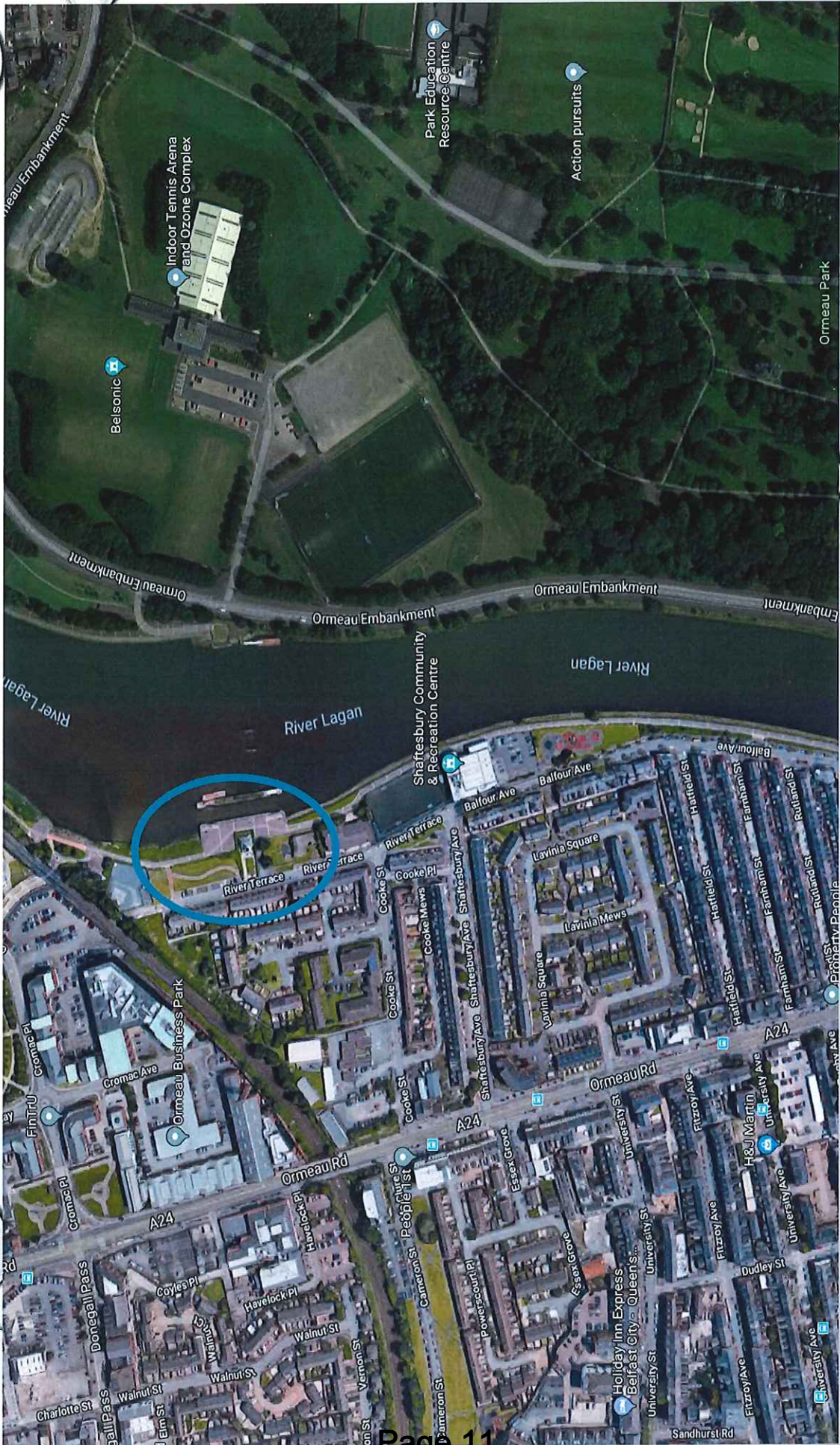
• 20 referrals and 1-1 sessions per week

• 65 sessions per week

Retention rate of clients finishing programmes of 80-90%

Footfall counter Average: 800 people per day



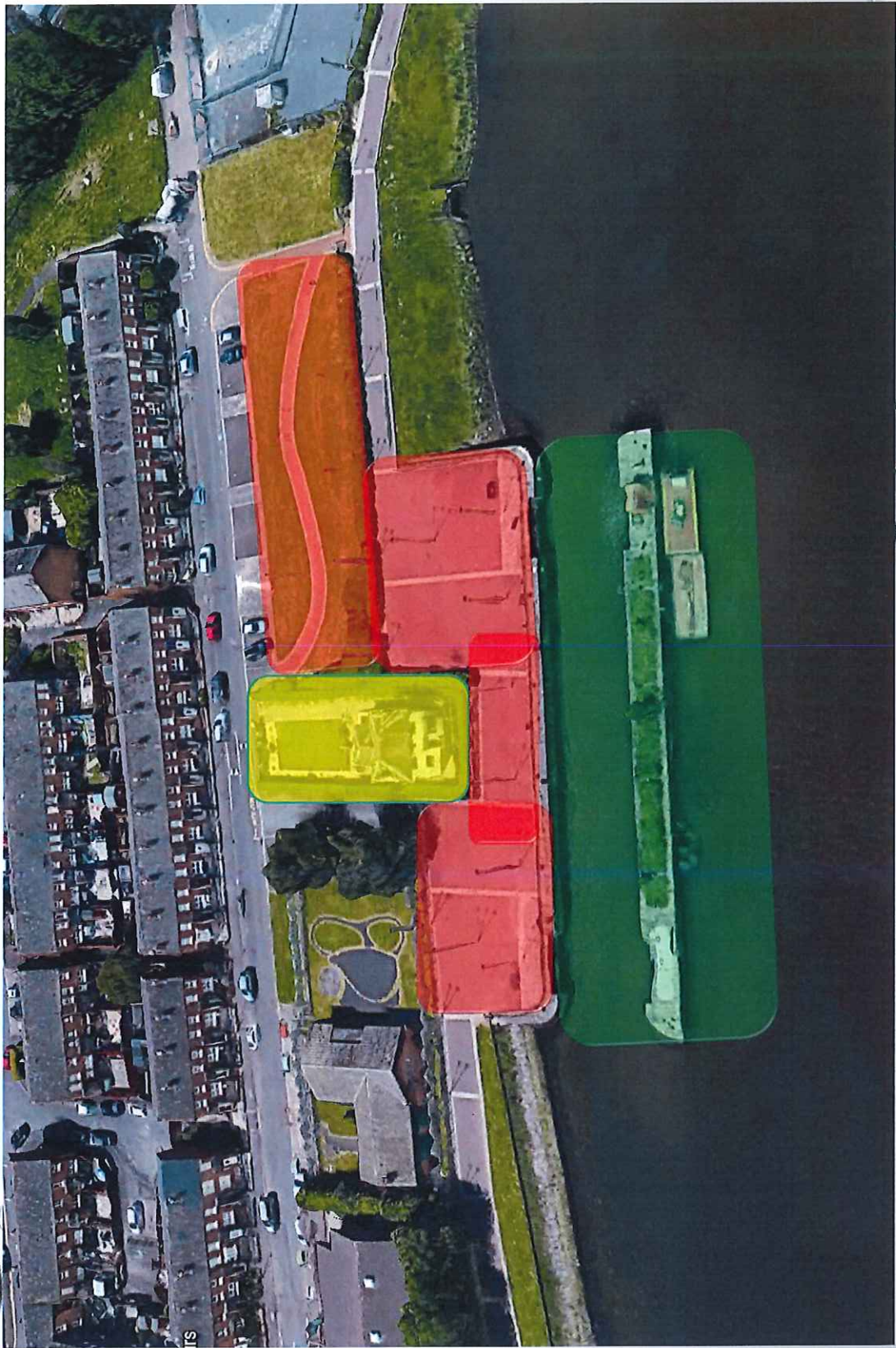





# A Community Catalyst for a Healthy Living Hub









- A PLACE THAT ALLOWS ACCESS TO AND ENJOYMENT OF THE RIVER

- A PLACE THAT THE LOCAL COMMUNITY IS PROUD OF AND FEEL PART OF

- A PLACE THAT IS HEALTHY, ACTIVE AND SAFE

- A PLACE THAT IS APPEALING FOR PEOPLE TO VISIT FOR LEISURE AND PLEASURE

- A PLACE THAT IS VIBRANT, CREATES EMPLOYMENT AND SUSTAINS LOCAL  
COMMUNITY

- A PLACE THAT IS SHARED AND CONNECTS PEOPLE AND COMMUNITIES

- A PLACE THAT IS INCLUSIVE AND HAS POSITIVE ACTIVITIES FOR ALL





# PROJECT POTENTIAL



**DfC**

Department  
for Communities  
[www.communities-ni.gov.uk](http://www.communities-ni.gov.uk)



**Belfast**  
City Council

# JANUARY – MARCH 2018

- COMMUNITY CONSULTATION
- FEASIBILITY STUDY
- DEVELOP DESIGNS AND CONCEPT DRAWINGS
- BUSINESS CASE

TO BE COMPLETED BY APRIL 2018



# NEXT STAGE

## • ENABLING WORKS TO BEGIN INITIAL DEVELOPMENT OF OUTCOMES OF BUSINESS CASE

Enabling works	Approx cost
Site investigation at lock keepers house	3,000
Site investigation at adjacent green and area of lock	4,000
Pedestrian bridge from walkway to lock edge	10,000
Replacement lock gates	20,000
Project / design team fees	3,000
Other development / project costs	2,000
Planning application fee	1,000
Building control fees	1,000
<b>TOTAL (VAT assessment 8%- £8,800)</b>	<b>£52,800</b>

**This page is intentionally left blank**